

# Urban Rail

Delivering localized, world-class expertise in urban rail.



# Unrivalled expertise in high-capacity urban rail

## Who we are

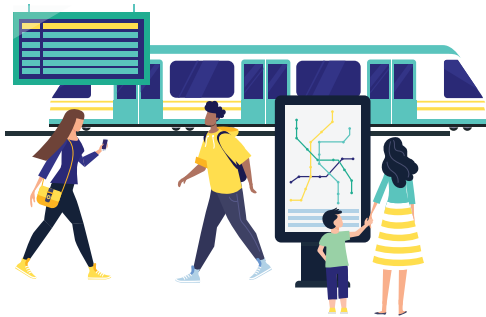
RATP Dev is a subsidiary of RATP Group, global leader in high-capacity urban rail and the world's third largest urban transportation operator. The Group has a century-long heritage as the historic operator of the ultra-dense, constantly-modernized Paris network. With over 2,000 in-house engineers, we master the entire value chain.

RATP Dev delivers localized, world-class expertise to the management of urban transportation systems worldwide, serving more than 120 operations in 17 countries.

**We listen to our clients to understand the local context and leverage our expertise to provide financially effective, tailored solutions.**

**We build, deliver and commit for the best of public transport – every day, everywhere, for everybody – to make it the natural choice for cities and passengers.**

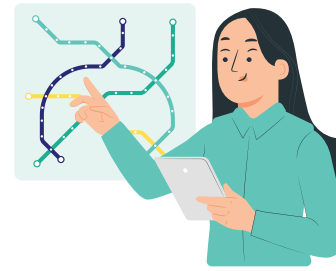
## What we deliver



### Operational Excellence

**Delivering high-quality mass transportation, daily.**

- Speciality in large flows of passengers at exceptional frequency.
- Highest international standards.
- Guarantee of reliability and punctuality.
- Uncompromising commitment to safety.
- Lean but efficient organization, with multi-skilled staff.
- Experience in highly complex rail systems.
- Management of large-scale events.
- Expertise in disrupted situation management and continuity of service.
- Implementation of data driven solutions to measure and boost our safety and operational performance.



### Complex Project Delivery

**Supporting cities in the design and implementation of complex urban rail projects.**

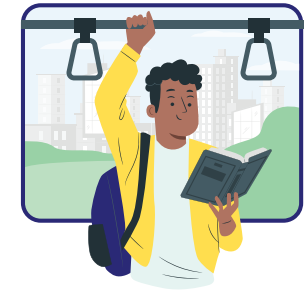
- Optimization of project design through to critical eye.
- Project management, complying with schedules and budgets.
- Service continuity during ongoing works.
- Pre-operational auditing, system acceptance and trial runs.
- Commissioning of new lines and extensions.
- Automation of metro lines without major traffic disruption.
- System upgrades and modernization of infrastructure.



### Asset Reliability and Sustainability

**Taking care of assets across all stages.**

- Complete asset lifecycle management, from design to end-of-life.
- 360° expertise: multi-material, multi-builder and multi-technology.
- Maintenance Level 1 to Level 5.
- Predictive maintenance to optimize total cost of ownership.
- Industrial engineering.



### Societal, Social and Environmental Impact

**Committing to sustainable cities and creating local value.**

- Societal commitment: contribution to regional development, integration in the local ecosystem, employability enhancement, local workforce and knowledge transfer.
- Social commitment: ambitious training programs, internal mobility, sustained social dialogue and quality of work-life balance.
- Environmental impact: energy consumption management and water management.

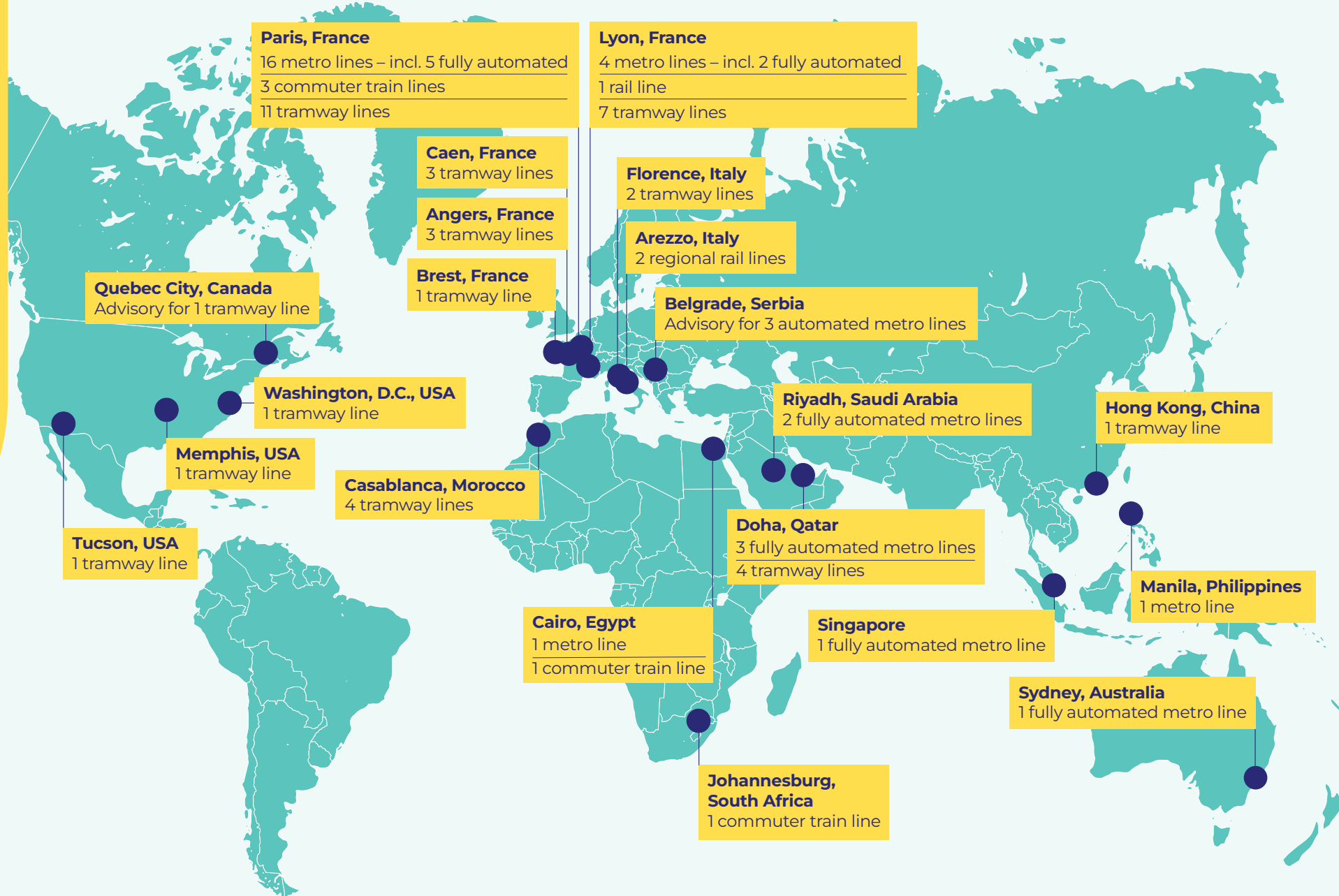


### High-Quality Passenger Experiences

**Combining mass transport with comfort and personalization.**

- Customer-centric culture.
- Fluid, intuitive, multi-modal journey.
- Reliable passenger information.
- Safety and universal accessibility.
- Practical additional services.
- Animations, arts and culture.

# Proven track record in urban rail



125

years of experience  
in urban rail



29

metro lines, including  
14 fully automated lines\*



8

railway lines\*



39

tramway lines\*



3.1

billion journeys per year on  
our urban rail lines worldwide

\*Currently or soon operating, with lines under construction



## Paris, France

Designing, operating and maintaining the world's most complex rail system.

- 2 billion+ passengers per year
- 1,000 km, 400 stations

### Key achievements

- Automation of two century-old metro lines without major traffic disruption (Line 1, Line 4)
- Commissioning of the world's first high-capacity automated metro line in 1998 and renewal of its automatic control system in 2024 (Line 14)
- +154 new stations with more than 102 km of tramway and metro lines between 2012 and 2024
- Operating Europe's busiest line with 1.3M passengers per day (RER A)



## Doha, Qatar

Developing a metro and tramway multi-modal transport network that is modern, safe, efficient and sustainable.

- 53.6 million passengers per year
- 104 km, 64 stations

### Key achievements

- Stellar performance during the FIFA World Cup 2022 with 18 million passenger journeys at 99.8% service performance



## Johannesburg, South Africa

Providing top-quality service for Gautrain, Africa's fastest regional train.

- 9 million passengers per year
- 80 km, 10 stations

### Key achievements

- 160 km/h peak hour speed
- 94% customer satisfaction



## Riyadh, Saudi Arabia

Creating a fully automated metro network for the backbone of the mass transit system for the Saudi capital.

- 64 km, 40 stations

### Key achievements

- Over 50% of local staff
- Mobilization for the commissioning of Blue Line and Red Line

## Cairo, Egypt

Delivering the best international rail standards in Cairo.

- 88+ million passengers per year
- 101 km, 46 stations

### Key achievements

- Successful integration of several extensions for Green Line 3
- Progressive opening of the new Capital Train line
- Over 90% of local employees



## Casablanca, Morocco

Supporting the most ambitious urban transport project in Africa and delivering a reliable service to relieve traffic congestion.

- 51 million expected passengers per year
- 74 km, 109 stations

### Key achievements

- Successful tramway network extensions: commissioning of Line T1 in 2012, Line T2 in 2019 and Lines T3 and T4 in 2024
- Seamless internalization of rolling stock maintenance in 2014







[ratpdev.com](https://ratpdev.com)

[ratpdev.communication@ratpdev.com](mailto:ratpdev.communication@ratpdev.com)



**RATP**  
**GROUP**

July 2025